



**Maximizing Your Budget,
Meet Green Objectives,
and Reduce Support Costs
Using TPM**

Tim Kubiak


iaitam.org | Peace, Love & Asset Management | ACE 2022




1

**Learn to get more from your existing budget by incorporation
Third Party Maintenance (TPM) into your strategy.**


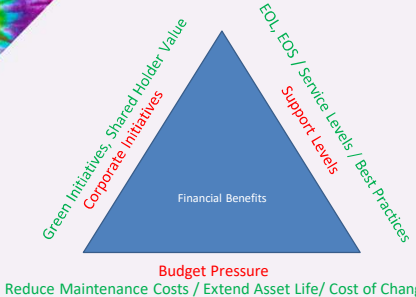
- How to reduce your support costs from OEM Maintenance up to 80%,
- How lengthen your assets useful life, extend the useable life of your valuable IT assets stated refresh cycles.
- Meet corporate environmental and green initiatives.
- One lucky attendee will win a \$150 dollar Amazon gift certificate.
- All attendees will receive a copy of "The Ultimate Guide to AOM" by Scott A. Lopez.
- Free Access to the ZPI AOM Portal




iaitam.org | Peace, Love & Asset Management | ACE 2022



2

iaitam.org | Peace, Love & Asset Management | ACE 2022



3

Basic Definitions

TPM (Third Party Maintenance) – Maintenance and Support provided by someone other than the Original manufacturer.

- TPM is over 25-years old
- Can cover a variety of technology segments (Networking, Storage, etc)
- a Direct Competitor to OEM Support and often competes with VAR and Channel Organizations

AOM (Alternative to OEM Maintenance) - A next generation approach to TPM that is 100% Channel led streamlining vendors






iaitam.org | Peace, Love & Asset Management | ACE 2022

4

Basic Definitions

Delta between the two

- TPM providers are known to take customers direct upon renewal cutting out the Solution Provider Channel Partner
- AOM is channel friendly and sold through reputable distributors. Distributors protect the Solution Provider Channel Partner by avoiding end-user customer contact.
- AOM is fast, friendly and simple compared to TPM. The AOM platform efficiencies far exceed TPM



iaitam.org | Peace, Love & Asset Management | ACE 2022

5

Value-Added Resellers (VARs) - is a company that adds features or services to an existing product, then resells it (usually to end-users) as an integrated product or complete "turn-key" solution. This practice occurs commonly in the electronics or IT industry, where, for example, a VAR might bundle a software application with supplied hardware.


Super VARs - A VAR that operates in multiple regions, states or countries.

OEMs (Original Equipment Manufacturers) - Examples include HPE, Cisco, Juniper, Hitachi, Dell/EMC, etc.

iaitam.org | Peace, Love & Asset Management | ACE 2022


6




Cloud Service Providers (CSPs) - This is the “modern” technology consultant typically defined by long-term engagement contracts with customers that have elements of recurring revenue, service level agreements and extensive use of automation.

Managed Service Providers (MSPs) - A company that remotely manages a customer's IT infrastructure and/or end-user systems, typically on a proactive basis and under a subscription model


- National Service Providers (NSPs)



iaitam.org | Peace, Love & Asset Management | ACE 2022




7




Personas

IT Pro –an individual whose position is assigned work associated with the establishment of and enforcement of standards and specifications for network computer systems; or the development of computer systems applications; or the development, installation and maintenance of local area network and mainframe computer systems or server environments; or the development, installation and maintenance of telecommunications systems; or provision of user support for any such systems.

Professional Asset Manager – “individuals and organizations involved in any aspect of IT Asset Management (“ITAM”), Software Asset Management (“SAM”), Hardware Asset Management and the lifecycle processes supporting IT Asset Management in organizations of every size and industry across the globe.”



iaitam.org | Peace, Love & Asset Management | ACE 2022



8



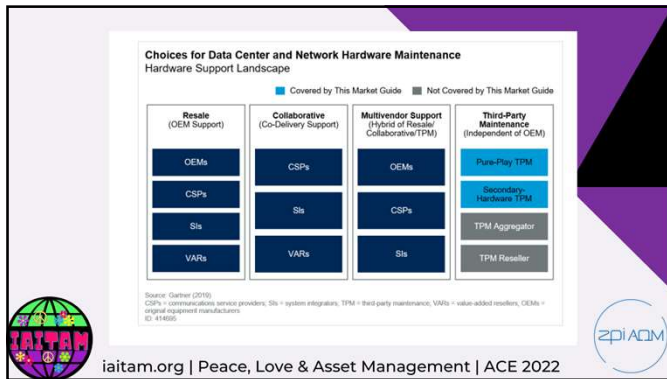
Defining the TPM/AOM
Opportunity Landscape



iaitam.org | Peace, Love & Asset Management | ACE 2022



9



10

Gartner Study - "over 10 million data center assets under TPM support"

Strategic Planning Assumptions

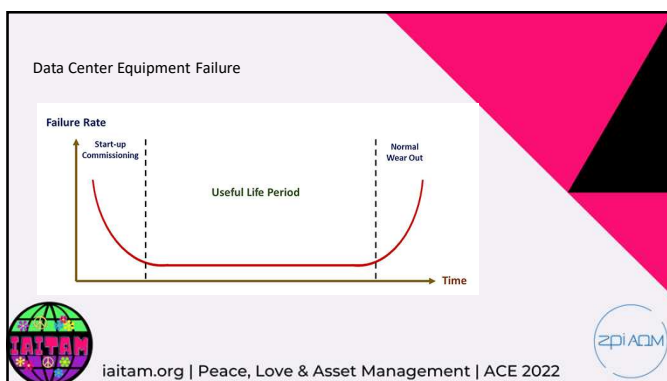
By 2021, 100% of existing TPM providers with \$20 million or more in TPM revenue will be acquired by a larger TPM provider, owned by private equity firms or both.

By 2021, 85% of North American hardware resellers/value-added resellers (VARs) will have an active, commission-based sales partnership with at least one TPM.

By 2021, hardware TPMs will compete directly against at least one other TPM in 60% of TPM greenfield opportunities and 75% of TPM renewals.

iaitam.org | Peace, Love & Asset Management | ACE 2022

11



12

Hardware Refresh Cycle

Option 1 Refresh & Purchase New	Option 2 Refresh & Purchase N-1	Option 3 Delay Your Refresh
Pros: Newest equipment on the market	Pros: Similar performance to the newest generation	Pros: Opportunity to save around 75% on equipment costs
May help increase productivity, capacity and speed in your data center	Less expensive than purchasing new	Apply your budget to more important projects
	May help increase productivity, capacity and speed in your data center	Save on CapEx costs
	Firmware updates & bugs have been addressed	
	Only pay for what you need	
Cons: Very expensive	Cons: Less computing power	Cons: You won't have the newest technology on the market
More firmware updates and bug fixes over the first year or two		

iaitam.org | Peace, Love & Asset Management | ACE 2022

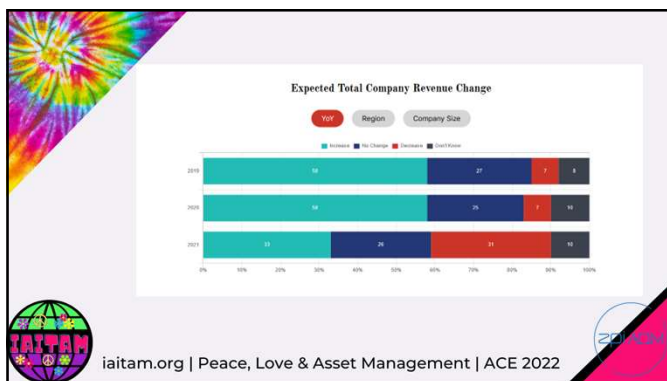
13

Hardware Refresh Cycle

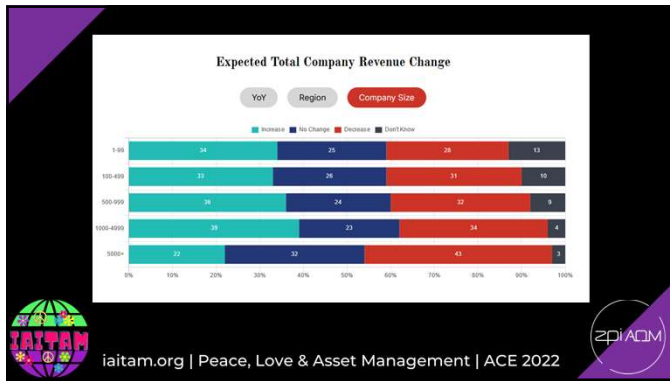
Option 1 Refresh & Purchase New	Option 2 Refresh & Purchase N-1	Option 3 Delay Your Refresh
Pros: Newest equipment on the market	Pros: Similar performance to the newest generation	Pros: Opportunity to save around 75% on equipment costs
May help increase productivity, capacity and speed in your data center	Less expensive than purchasing new	Apply your budget to more important projects
	May help increase productivity, capacity and speed in your data center	Save on CapEx costs
	Firmware updates & bugs have been addressed	
	Only pay for what you need	
Cons: Very expensive	Cons: Less computing power	Cons: You won't have the newest technology on the market
More firmware updates and bug fixes over the first year or two		

iaitam.org | Peace, Love & Asset Management | ACE 2022

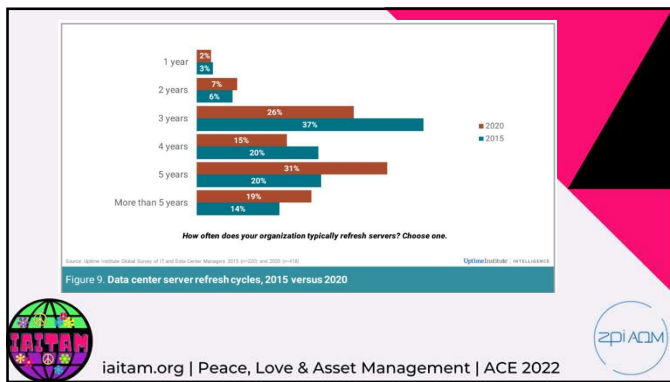
14



15



16



17



18



19

Server and Storage Case Study – 130 Assets – Government Agency

Item	OEM Cost	AOM/TPM Cost	Savings
ProLiant DL380 Gen9	\$1176	\$688	\$487
ProLiant DL360p Gen8	\$2,079	\$1,029	\$1,049
ProLiant DL360p Gen8XD	\$269	\$147	\$122
HP MSA p2000 G3	875.00	\$392.16	\$482.84

20

Server and Storage Example – Costs Per Asset Class

Item	OEM Cost	AOM/TPM Cost	Savings
ProLiant DL380 Gen9 (81 Assets)	\$94,080	\$55,059	\$39,021
ProLiant DL360p Gen8 (34 Assets)	\$70,686	\$34,999	\$35,686
ProLiant DL360p Gen8XD (10 Assets)	\$2,421.00	\$1,323.54	\$1,097.46
HP MSA p2000 G3 (5 Assets)	\$4,375.00	\$1,960.80	\$2,414.20
Totals	171,831.00	\$93,490.54	\$78,340.46

21

Server and Storage Example – Savings Strategy - Service Levels

Item	OEM Cost	ADM/TPM Cost	Services Levels
ProLiant DL380 Gen9	\$1176	\$688	Parts and labor - 1 year - on-site - 9x5 - response time: NBD
ProLiant DL360p Gen8	\$2,079	\$1,029	Parts and labor - 3 years - on-site - 24x7 - response time: 4 h
ProLiant DL360p Gen8XD	\$269	\$147	Parts and labor - 3 years - on-site - 9x5 - response time: NBD
HP MSA p2000 G3	875.00	\$392.16	Parts and labor - 1 year - on-site - 9x5 - response time: NBD

iaitam.org | Peace, Love & Asset Management | ACE 2022

22

A Retailer and a Leveraging Service Levels Solution



iaitam.org | Peace, Love & Asset Management | ACE 2022

23

Route Switch Examples – Costs Per Asset Class

Item	Service Level	OEM Cost	ADM/TPM Cost	Savings
ASA5515-K9	BcSNBD Onsite	\$689.00	\$275.60	\$413.40
ASA5515-K9	BcSNBD Parts Only	\$482.78	\$193.11	\$289.67
ASA5520-BUN-K9	BcSNBD Onsite	\$1,181.11	\$472.44	\$708.67
ASA5520-BUN-K9	BcSNBD Parts Only	\$996.11	\$398.44	\$597.67
AIR-LAP1131G-A-K9	BcSNBD Onsite	\$64.44	\$25.78	\$38.67
AIR-LAP1131G-A-K9	BcSNBD Parts Only	\$45.00	\$18.00	\$27.00
CISCO2911-SEC/K9	BcSNBD Onsite	\$602.78	\$241.11	\$361.67
CISCO2911-SEC/K9	BcSNBD Parts Only	\$481.67	\$192.67	\$289.00
CISCO3925-SEC/K9	BcSNBD Onsite	\$1,508.89	\$603.56	\$905.33
CISCO3925-SEC/K9	BcSNBD Parts Only	\$1,048.89	\$419.56	\$629.33

iaitam.org | Peace, Love & Asset Management | ACE 2022

24

Limited Assets
Massive Impact
for a
Global Financial
Institution




iaitam.org | Peace, Love & Asset Management | ACE 2022




25


Global Financial Institution - Service Level – Storage Approach

Item	Extended OEM Cost	Extended AOM/TPM Cost	Services Levels
Z561-ed1 IBM Pure Data Analytics N20001 – 010w2 (3 Assets)	\$450,000	\$290,379	Parts and labor - 1 year - on-site - 7x24 – response time: 4hr



Savings \$159,621 per device
Total Savings for 3 assets is \$478,863/year




iaitam.org | Peace, Love & Asset Management | ACE 2022



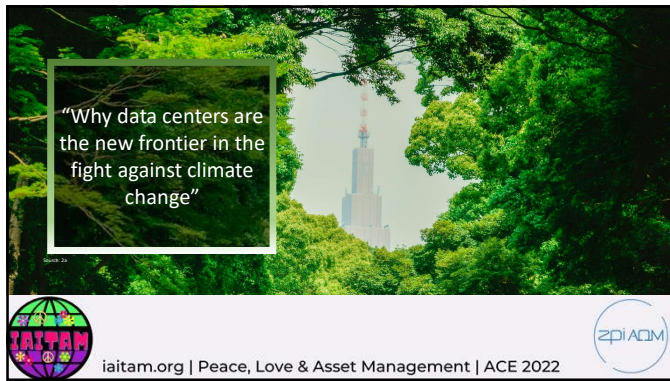
26

iaitam.org | Peace, Love & Asset Management | ACE 2022



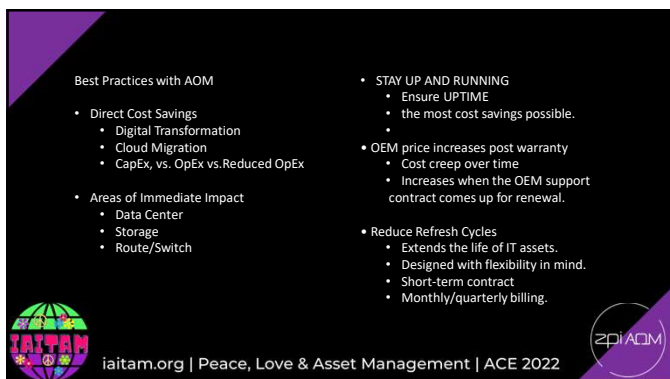
27



28



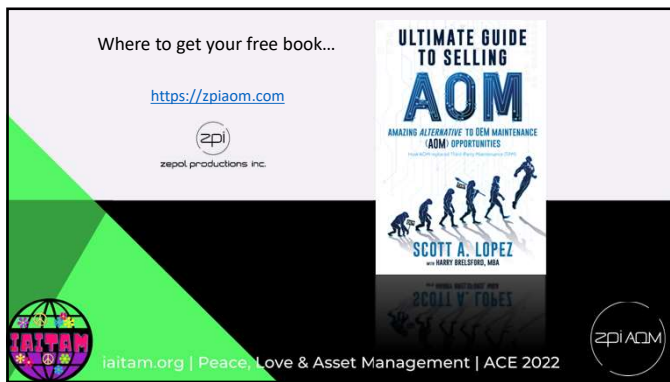
29



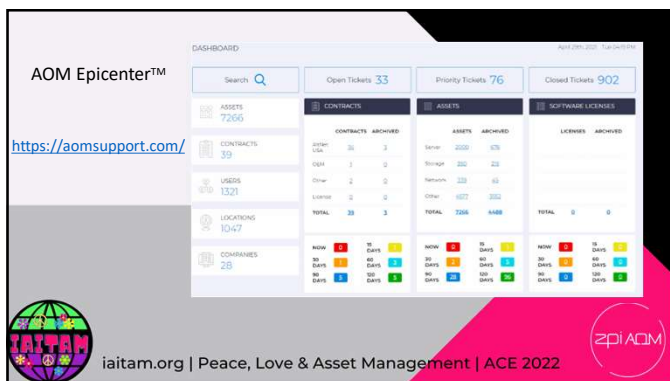
30



31



32



33



34




35




36


Connect with us




Facebook



Twitter



Instagram



aitam.org | Peace, Love & Asset Management | ACE 2022

