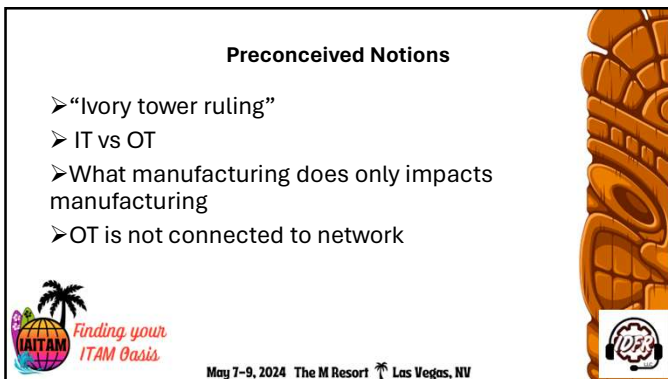




1




2




3

Actual Realities

- > All decisions and choices made in plants, mills, and satellite offices impact corporations that manage networks centrally
- > It is not IT vs. OT. The two look at assets differently. In OT (Operational Technology) Availability comes first in prioritization order
- > If corporate office are responsible for oversight of network infrastructures, anything connected to the network is the responsibility of the business
- > If it gets plugged in for remote access, or for applying updates or data transfers it is connected.



Finding your ITAM Basis




May 7-9, 2024 The M Resort Las Vegas, NV


4

Breaking Down Brick Walls

- ❖ Build relationships with plants, mills, and satellite offices
 - ❖ Ask what keeps site members responsible for supporting assets up at night?
 - ❖ How does the current way changes are performed impact current assets?
 - ❖ What is needed to replace outdated assets?



Finding your ITAM Basis




May 7-9, 2024 The M Resort Las Vegas, NV


5

Breaking Down Brick Walls

- ❖ Build relationships and communication bridges with Senior Leadership
 - ❖ Any successful asset management initiative requires Senior Leadership complete buy in
 - ❖ How will operational technology asset management initiatives be funded?
 - ❖ Is there an understanding of the need for life cycle management funding in manufacturing to build out the 2-5-10 year plans to replace outdated assets and planning out funding



Finding your ITAM Basis



May 7-9, 2024 The M Resort Las Vegas, NV

6

Slide 4

GD0 IT utilizes active scanning, where in OT you have to be mindful of the type of scanning that is used as OT environments typically have older devices in use that could cause halts in production or safety issues if active scans are utilized.

Grant, Davida, 2024-04-01T22:54:55.246

GD1 If a OT device is running Windows 7, connected to network and gets exposed to malware if connected it can spread. It is important to know all the assets and have inventory to help with multiple team awareness

Grant, Davida, 2024-04-01T22:58:24.748

The Collaboration

The start can be as simple as taking donuts out to a plant, mill or satellite office and starting with small talk. GDO



IAITAM Finding your ITAM Basis

May 7-9, 2024 The M Resort Las Vegas, NV




7

Collaboration

Listen when the question is asked "What keeps you up at night?"


- Make note of what is said and when walking through, ask to show the asset.
- When you see the asset look at the assets that surround and document, notate connections and ask how does one asset communicate with the next

When one listens to understand collaborative relationships can start.



IAITAM Finding your ITAM Basis

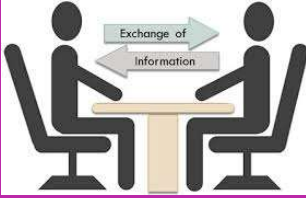
May 7-9, 2024 The M Resort Las Vegas, NV



8


Build the Bridge

- If concern is not enough time to document assets, offer to put boots on the ground and help collect.
- Work with other workstreams and establish quarterly updates centralized for all locations (at end of updates have Q & A sessions)
- Make sure while progressing in improvements that the lines of communication remain open and parties are informed before impact, trying to avoid during changes or after with aftermath.
- Tag all assets that need to be tagged
- Give read only access of asset information captured with ability to submit request for information updates



IAITAM Finding your ITAM Basis

May 7-9, 2024 The M Resort Las Vegas, NV



9

Slide 7

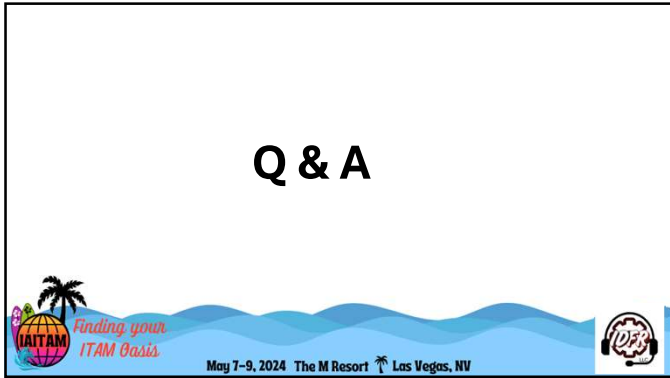
GDO Understand if at a corporate or non-manufacturing level the pace and speeds of a day in the office can be 100 % different.

Sites are typically on go, go.

Be prepared to walk and talk.

Make sure to have the proper safety wear prior to going to sites.

Grant, Davida, 2024-04-01T23:38:28.920



10



11
