



1

---

---

---

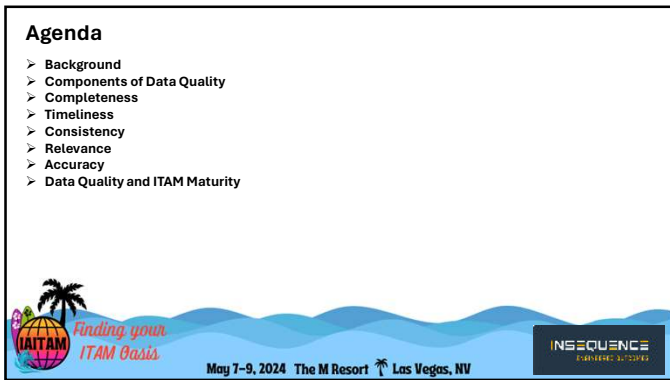
---

---

---

---

---



2

---

---

---

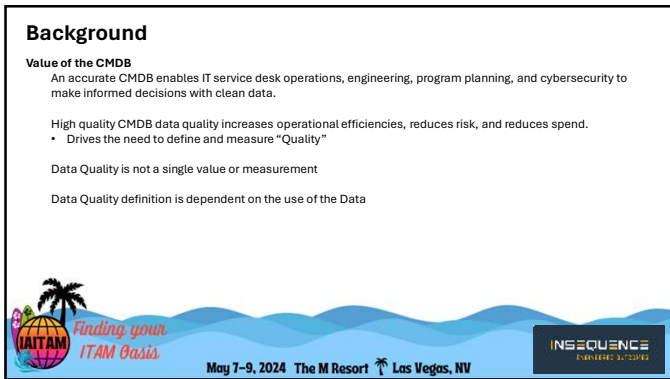
---

---

---

---

---



3

---

---

---

---

---


---

---

---


### Components of Data Quality

- **Completeness**  
Do you have inventory coverage over all of your IT assets?  
Are you getting all of the data elements that you need from your IT assets?
- **Timeliness**  
Is the IT asset data you are getting fresh?
- **Consistency**  
Is the IT asset data you are getting normalized?  
Are there duplicate records?
- **Relevance**  
Is the IT asset data related to my system boundaries, locations, or programs?  
Is the IT asset data enriched with vulnerability, lifecycle (EoL, EoS, GA), and related to product catalogs?
- **Accuracy**  
Are there errors in the IT asset data?



*Finding your ITAM Basis*

May 7-9, 2024 The M Resort Las Vegas, NV



4

---

---

---

---

---

---

---

---

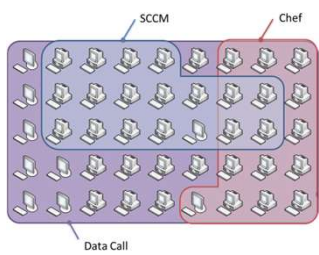

---

---

### Completeness


➤ Evaluate how much of the expected data is present.

- Understand the components of inventory data
- Understand the Fidelity of the data source
- The Unknown Unknown – Security is your partner  
Gaps identified through Analysis
- Investigate ways to move to High Fidelity views of inventory
- Do the underlying Data Elements collected support the License types used?

*Finding your ITAM Basis*

May 7-9, 2024 The M Resort Las Vegas, NV



5

---

---

---

---

---

---

---

---

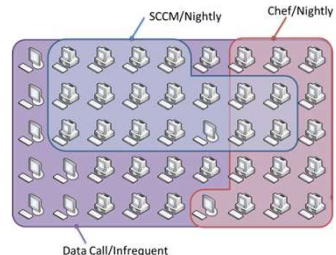

---

---

### Timeliness


➤ Consider the recency of the data. Depending on the context, outdated information might be less valuable. Timeliness is crucial in fields where data changes rapidly.

- Understand the collection timeline for each inventory data
- Recommend categorizing:  
Device less than 7 days  
Device between 7 and 30 days  
Device age greater than 30 days

*Finding your ITAM Basis*

May 7-9, 2024 The M Resort Las Vegas, NV



6

---

---

---

---

---

---

---

---

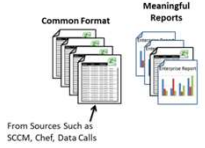
---

---

### Consistency

➤ Ensure uniformity in the format and structure of the data. Inconsistent data formats or units can lead to confusion and errors in analysis.

- Consistency in data format enables:
  - Normalized Inventory
  - De-duplicated Inventory
- Data Scripts to understand Assets



From Sources, Such as SCCM, Chef, Data Calls

Common Format

Meaningful Reports

**INSOURCE**  
ESTABLISHED 2012

May 7-9, 2024 The M Resort Las Vegas, NV

*Finding your ITAM Basis*

---

---

---

---

---

---

---

---

---

---

---

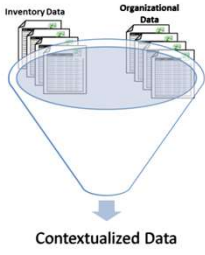
---

7

### Relevance

➤ Is the data contextualized to support the organization critical functions.

- Common meta data elements are EoL, EoS, GA
- Categories/sub-categories
- Common System Name e.g. ERP, CRM
- Location
- Organization supported



Inventory Data

Organizational Data

Contextualized Data

**INSOURCE**  
ESTABLISHED 2012

May 7-9, 2024 The M Resort Las Vegas, NV

*Finding your ITAM Basis*

---

---

---

---

---

---

---

---

---

---

---

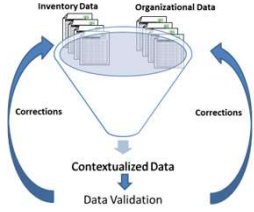
---

8

### Accuracy:

➤ Check for errors, inconsistencies, and inaccuracies within the data. Incorrect or outdated information can significantly impact the quality of the dataset.

- Establish a validation program to test the data
- Build validation into use
- Track Data to understand how extensively it is used
  - %SW Spend – License compliance and validation
  - %COTS SW – License Compliance and validation



Inventory Data

Organizational Data

Contextualized Data

Data Validation

Corrections

Corrections

**INSOURCE**  
ESTABLISHED 2012

May 7-9, 2024 The M Resort Las Vegas, NV

*Finding your ITAM Basis*

---

---

---

---

---

---

---

---

---

---

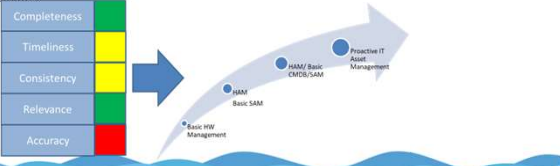
---

---

9

### Data Quality and ITAM Maturity:

- Automation alone does not guarantee quality
- Organizations need to establish a basis of understanding for their data
  - This allows an informed evaluation of the SAM Tool, Service and/or the data
- Organizations should evaluate the quality of their data and understand the risk profile that maturity indicates



**IATAM** Finding your ITAM Basis  
May 7-9, 2024 The M Resort Las Vegas, NV  
**INSEQUENCE** PARTNERING TO SUCCEED

---

---

---

---

---

---

---

---